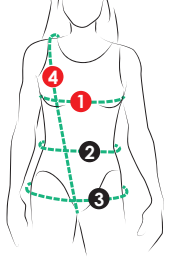




Maillot de bain à manches longues avec zip au devant. Devant doublé avec option de pochette pour l'insertion de formes amovibles. Les cuisses sont finies avec un élastique. Protégez-vous du soleil sans avoir à porter un chandail par-dessous un maillot!

Long sleeve front zip swimsuit. The front is lined and you can add a pocket for removable swim cups. Leg openings are finished with elastic. Get sun protection without having to layer rashguard and swimsuit!

MESURES DU CORPS (FILLES) - BODY MEASUREMENTS (GIRLS)

Âge approximatif - Approximate age	2	3	4	5	6	7	8	9	10	11	12	13	
Tailles européennes - European sizes	92	98	104	112	119	127	135	142	146	150	152	155	
TAILLE JALIE - JALIE SIZES	F	G	H	I	J	K	L	M	N	O	P	Q	
	1 TOUR DE POITRINE FULL BUST	21"	22"	23"	24"	25"	26"	27"	28"	29"	30"	31"	32"
		53 cm	56 cm	58 cm	61 cm	64 cm	66 cm	69 cm	71 cm	74 cm	76 cm	79 cm	81 cm
	2 TOUR DE TAILLE NATURAL WAIST	20"	20 1/2"	21"	21 1/2"	22"	22 1/2"	23"	23 3/4"	24 1/2"	25 1/4"	25 3/4"	26 1/2"
		51 cm	52 cm	53 cm	55 cm	56 cm	57 cm	58 cm	60 cm	62 cm	64 cm	66 cm	67 cm
3 TOUR DES HANCHES FULL HIPS	22"	23"	24"	25"	26"	27"	28"	29 1/2"	30 1/2"	32"	33"	34 1/2"	
	56 cm	58 cm	61 cm	64 cm	66 cm	69 cm	71 cm	74 cm	78 cm	81 cm	84 cm	87 cm	
4 TRONC (DEVANT+DOS) TORSO (FRONT+BACK)	35"	37"	39"	41"	43"	45"	47"	48 3/4"	50 1/2"	52"	53 3/4"	55 1/2"	
	89 cm	94 cm	99 cm	104 cm	109 cm	114 cm	119 cm	123 cm	128 cm	132 cm	137 cm	141 cm	

TISSU REQUIS - YARDAGE

60" / 150 cm		TISSU PRINCIPAL MAIN FABRIC	3/4 yd	3/4 yd	3/4 yd	3/4 yd	3/4 yd	3/4 yd	3/4 yd	3/4 yd	3/4 yd	3/4 yd	3/4 yd	3/4 yd	1 yd
			0.50 m	0.50 m	0.55 m	0.55 m	0.55 m	0.60 m	0.65 m	0.65 m	0.65 m	0.65 m	0.65 m	0.65 m	0.65 m
Tricot avec spandex, extensible en largeur ET en longueur (nylon/polyester+spandex). Knit with spandex with stretch across the width AND in the length (nylon/polyester + spandex)		TISSU CONTRASTANT CONTRAST FABRIC	1/2 yd	1/2 yd	1/2 yd	1/2 yd	1/2 yd	1/2 yd	1/2 yd	1/2 yd	1/2 yd	1/2 yd	1/2 yd	1/2 yd	3/4 yd
			0.30 m	0.30 m	0.30 m	0.35 m	0.35 m	0.35 m	0.35 m	0.35 m	0.40 m	0.40 m	0.45 m	0.45 m	0.50 m
		DOUBLURE À MAILLOT DE BAIN SWIMWEAR LINING	1/2 yd	1/2 yd	1/2 yd	1/2 yd	1/2 yd	1/2 yd	1/2 yd	1/2 yd	1/2 yd	1/2 yd	3/4 yd	3/4 yd	3/4 yd
			0.30 m	0.30 m	0.30 m	0.35 m	0.35 m	0.35 m	0.35 m	0.40 m	0.40 m	0.55 m	0.60 m	0.65 m	

50% ÉLASTICITÉ MINIMUM REQUISE (LARGEUR ET LONGUEUR)
MINIMUM STRETCH REQUIRED (WIDTH AND LENGTH)

VOTRE TISSU DEVRAIT S'ÉTIRER
YOUR FABRIC SHOULD STRETCH

JUSQU'ICI
TO HERE

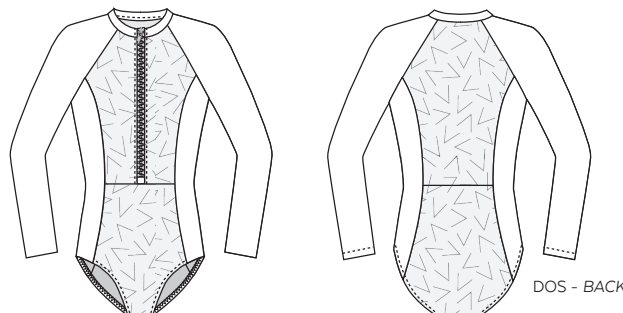
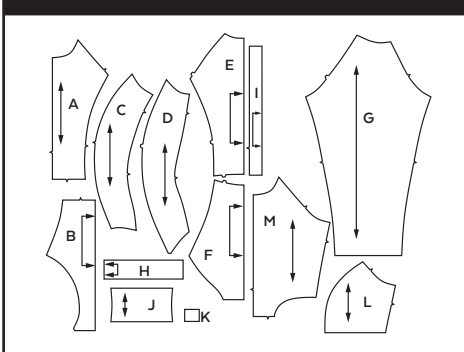
MESURES DU CORPS (FEMMES) - BODY MEASUREMENTS (WOMEN)

Taille US APPROX. US size	2	4	6	8	10	12	14	16	18	20	22	24				
Prêt-à-porter APPROX. RTW size	XS	S		M		L		XL		2XL						
Tailles euro - European sizes	34	36	38	40	42	44	46	48	50	52	54	56				
TAILLE JALIE - JALIE SIZES	R	S	T	U	V	W	X	Y	Z	AA	BB	CC	DD	EE	FF	GG
1 TOUR DE POITRINE FULL BUST	33"	34"	35"	36"	37"	38"	39"	40"	41 1/2"	42 3/4"	44"	45 1/2"	46 3/4"	48 1/4"	49 1/2"	51"
	84 cm	86 cm	89 cm	91 cm	94 cm	96 cm	99 cm	102 cm	106 cm	109 cm	112 cm	116 cm	119 cm	123 cm	126 cm	130 cm
2 TOUR DE TAILLE NATURAL WAIST	27"	28"	29"	30"	31"	32"	33"	34"	35 1/4"	36 1/2"	37 3/4"	39"	40 1/4"	41 1/2"	42 3/4"	44"
	69 cm	71 cm	74 cm	76 cm	78 cm	81 cm	84 cm	86 cm	89 cm	93 cm	96 cm	99 cm	102 cm	105 cm	109 cm	112 cm
3 TOUR DES HANCHES FULL HIPS	36"	37"	38"	39"	40"	41"	42"	43"	44 1/2"	45 3/4"	47"	48 1/2"	49 3/4"	51 1/4"	52 3/4"	54"
	91 cm	94 cm	96 cm	99 cm	102 cm	104 cm	106 cm	109 cm	113 cm	116 cm	120 cm	123 cm	126 cm	130 cm	134 cm	137 cm
4 TRONC (DEVANT+DOS) TORSO (FRONT+BACK)	57 1/4"	59"	59 1/2"	60"	60 1/2"	61"	61 1/2"	62 1/2"	63 1/2"	64"	65"	65 3/4"	66 1/2"	67 1/4"	68 1/4"	69"
	145 cm	150 cm	152 cm	153 cm	154 cm	155 cm	156 cm	159 cm	161 cm	163 cm	165 cm	167 cm	169 cm	171 cm	173 cm	175 cm

TISSU REQUIS - YARDAGE

TISSU PRINCIPAL MAIN FABRIC	1 yd	1 yd	1 yd	1 yd	1 yd	1 yd	1 yd	1 yd	1 yd	1 yd	1 yd	1 1/4 yd	1 1/4 yd	1 1/4 yd	1 1/4 yd	1 1/4 yd
	0.70 m	0.70 m	0.70 m	0.75 m	0.75 m	0.75 m	0.75 m	0.80 m	0.85 m	0.85 m	0.90 m	1.00 m	1.05 m	1.05 m	1.05 m	1.05 m
TISSU CONTRASTANT CONTRAST FABRIC	3/4 yd	3/4 yd	3/4 yd	3/4 yd	3/4 yd	3/4 yd	3/4 yd	3/4 yd	3/4 yd	3/4 yd	1 1/4 yd	1 1/4 yd	1 1/4 yd	1 1/4 yd	1 1/4 yd	1 1/4 yd
	0.50 m	0.50 m	0.50 m	0.50 m	0.50 m	0.50 m	0.50 m	0.50 m	0.55 m	0.55 m	1.00 m	1.00 m	1.00 m	1.05 m	1.05 m	1.05 m
DOUBLURE À MAILLOT DE BAIN SWIMWEAR LINING	3/4 yd	1 yd	1 yd	1 yd	1 yd	1 yd	1 yd	1 yd	1 1/4 yd	1 1/4 yd	1 1/4 yd	1 1/4 yd	1 1/4 yd	1 1/2 yd	1 1/2 yd	1 1/2 yd
	0.65 m	0.70 m	0.75 m	0.80 m	0.85 m	0.85 m	0.90 m	0.90 m	0.95 m	0.95 m	1.00 m	1.05 m	1.10 m	1.20 m	1.25 m	1.30 m

PIÈCES - PATTERN PIECES



MERCERIE - NOTIONS

FERMETURE À GLISSIÈRE SPORT (DENTS EN PLASTIQUE) MOLDED PLASTIC (SPORT) ZIPPER		ÉLASTIQUE 1 CM 3/8" ELASTIC	
F-K	30 cm (12")	F-S	2 m (2 1/4 yd)
L-O	35 cm (14")	T-GG	2.5 m (2 3/4 yd)
P-R	40 cm (16")		
S-GG	45 cm (18")		
FACULTATIF - OPTIONAL			
P-FF	FORMES EN MOUSSE SWIM CUPS	1	PAIRE - PAIR



PRÊT À COUDRE // READY TO SEW
ressources de couture (6 mm / 1/4") incluses dans le patron
6 mm / 1/4" seam allowances included in the pattern



7004013